



WV LEGISLATIVE REGULATION
TITLE 189 SERIES 2009

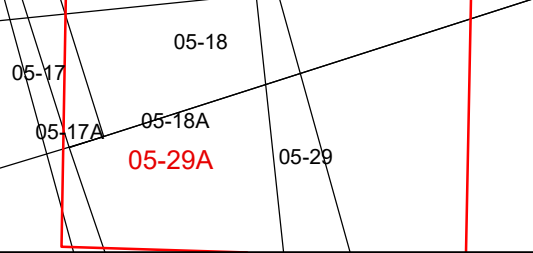
Disclaimer:
This tax map was compiled for purposes of taxation from available record evidence and has not been field verified. This map is not a valid survey plat and the data on this map does not imply any official status to such data. The State of West Virginia and county assessors' office assume no liability that might result from the use of this map.

Restrictions:
All finished tax maps created under the provisions of legislation are the property of the county assessors who created them and the reproduction, copying, distribution, sale, or lease of such tax maps or copies thereof without the written permissions of the respective county assessors is prohibited by law.

Legend					
Corporation line	---	Railroad	—+—+—+—	School	
District line	- - - - -	Lot line	—+—+—+—	Church	
County line	=====	Road Centerline	—+—+—+—	Deed lot number	(25)
State line	=====	Streams	~~~~~	Parcel or index number	(23)
Property Line	=====	Trans Line	—+—+—+—	Parcel acreage	5.27 Ac
Right of Way	=====	Cemetery	—+—+—+—		

Revisions					
1	AS OF JULY 1 1996	KWS	6	AS OF JULY 1 2001	JVB
2	AS OF JULY 1 1997	KWS	7	AS OF JULY 1 2002	JVB
3	AS OF JULY 1 1998	JVB	8	AS OF JULY 1 2003	JVB
4	AS OF JULY 1 1999	JVB	9	AS OF JULY 1 2004	JVB
5	AS OF JULY 1 2000	JVB	10	AS OF JULY 1 2005	JVB
11	AS OF JULY 1 2007	JVB	12	AS OF JULY 1 2008	RIR
12	AS OF JULY 1 2008	RIR	13	AS OF JULY 1 2011	ASC
13	AS OF JULY 1 2011	ASC	14	AS OF MAR 29 2012	ASC
14	AS OF MAR 29 2012	ASC	15	AS OF JAN 1 2013	ASC
16	AS OF JAN 1 2014	ASC	17	AS OF JAN 1 2015	ASC
17	AS OF JAN 1 2015	ASC	18	AS OF JAN 1 2020	AGD
18	AS OF JAN 1 2020	AGD	19	AS OF JAN 1 2022	AGD
19	AS OF JAN 1 2022	AGD	20	AS OF JAN 18 2024	AGD

STATE OF WEST VIRGINIA
COUNTY OF HAMPSHIRE
Office of Assessor



Gore
Map: 29A
Created: 1/19/2024
Scale: 1 in = 100 ft