

THIS DOCUMENT IS A TAX MAP: It was compiled for purposes of taxation from available record evidence and has not been field verified. It is not a valid survey plat. The existence of data on this map does not imply any "official" status to such data. The WV State Tax Dept. and the Marion County Assessor's Office assume no liability that might result from the use of this document.

REVISION HISTORY				
1	OCT. 2016	NEW MAP TN	6	JAN. 2024 NEW MAP AGD
2	OCT. 2018	NEW MAP TN	7	
3	OCT. 2019	NEW MAP TN	8	
4	OCT. 2021	NEW MAP TN	9	
5	NOV. 2022	NEW MAP AGD	10	

Property Line

Road Right of Way

Corporation Line

District Line

County Line

Original Lot Line

Lot Number

Parcel Number

Water

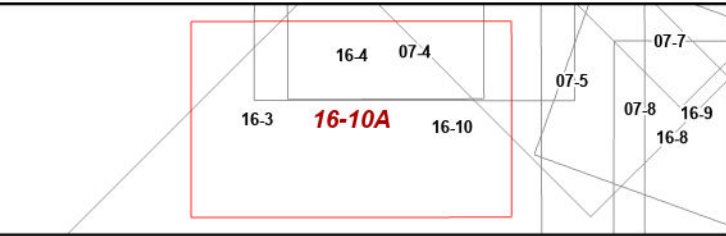
Railroad

99

(15)

OFFICE OF THE
MARION COUNTY ASSESSOR

All tax maps created under the provisions of reappraisal legislation are the property of Marion County Reappraisal Program and the reproduction, copying, distribution or sale of such maps or any copies thereof without the written permission of the Marion County Assessor is prohibited by law. 03-14



PAW PAW DISTRICT

Map: 16-10A

Date of Map: 1/29/2024

N

1:1,200