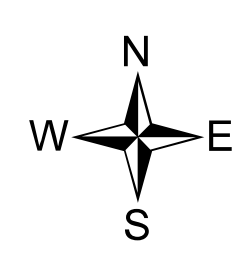
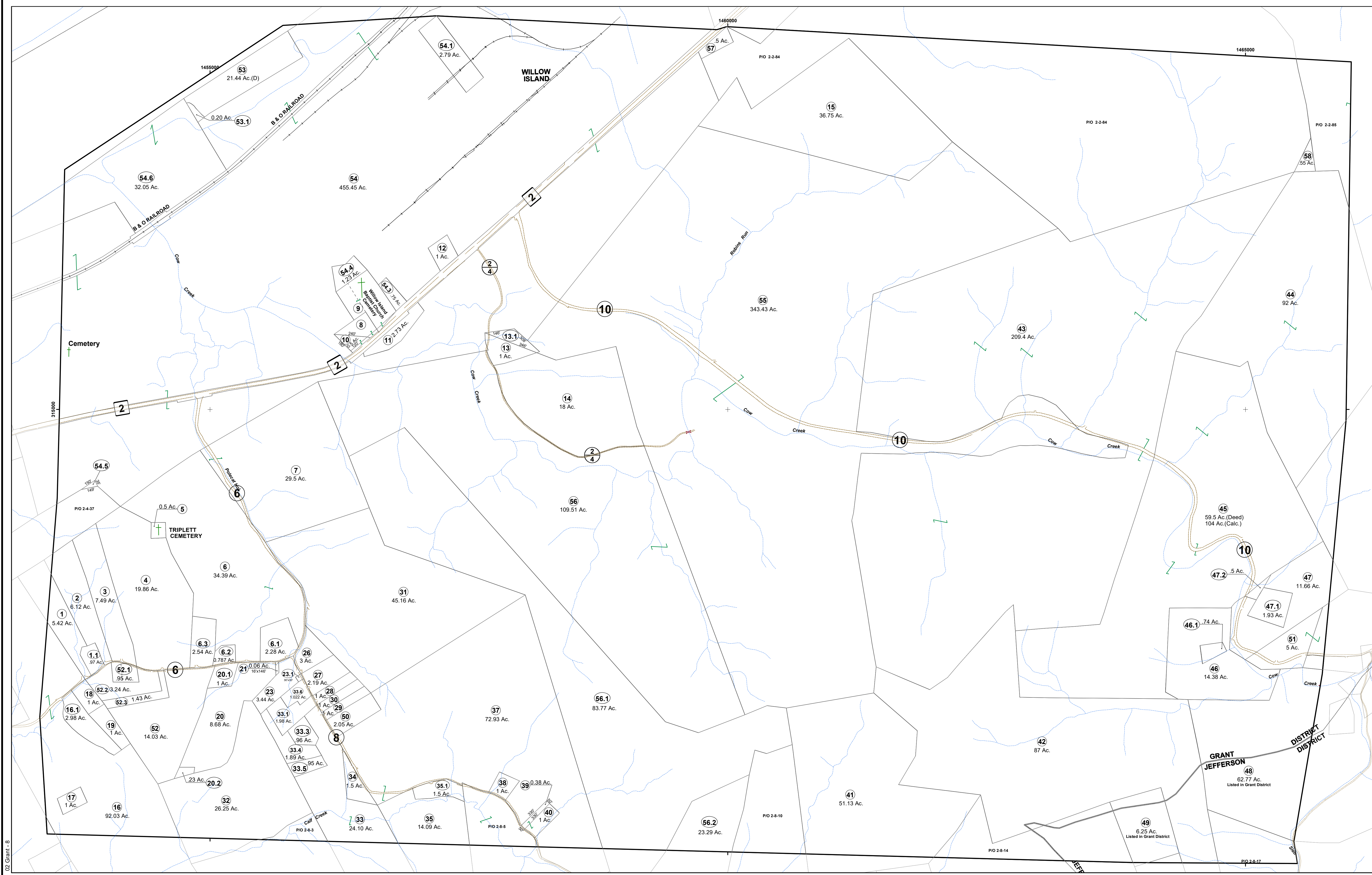


02 Grant - 5



FOR TAX PURPOSES ONLY

Prepared By:
Vickie Gorrell
Pleasants County Assessor

Legend			
Property Line	_____	Original Lot Line	-----
Edge of pavement or roadway	- - - - -	Deed lot number (in parenthesis)	(15)
Corporation line	- . - . - .	Parcel or index number	⑮
District line	- . - . - .	Improvement	○
County Line	- - - - -	Railroad	_____

Restriction	
	"All finished tax maps created under the provisions of legislation are the property of the county assessor who created them and the reproduction, copying, distribution, sale, or lease of such tax maps or copies thereof without the written permission of the Pleasanton County Assessor is prohibited by law." The State Department of Revenue is hereby designated as an agent for all counties for the purpose of sale, reproduction and distribution of the tax maps.

Key Map		
—	2	3
4	5	6
7	8	J-8

PLEASANTS COUNTY - WEST VIRGINIA
Office of Assessor

District: 02 Grant
Map No: 5
Drawn By: Benjamin T Sweeney
Date: February 1, 2024
Scale: 1 inch = 400 feet